



About Us

PT. PUMA ENG was founded in the year 2013. The original mission of the company was associated with conducting route survey. As a result of rapid growth and client demand, PUMA continued to diverse itself in areas of topography and hydrographic surveying and mapping. Today it serves a wide spectrum of clientele utilizing our multi-disciplinary, professional capabilities in surveying, Soil Investigation and UAV Photogrammetry.

UAV Indonesia (PT.PUMA ENG) is a specialist aerial photography. Experts in a variety of geospatial disciplines, our team of experienced professionals provides a cost effective, customized solutions with the best quality for each project.

Our company is involved in all aspects of the acquisition, production, presentation and management of geospatial data and can provide services to clients, large or small. We have a wide range of remote sensing technology, modern electrical aircraft and flight crew can respond to specific Digital Photography throughout Indonesia.

More than 3 years of experience in the geospatial industry doing work for small businesses, private corporations and all levels of government has instilled ethic of excellence and innovation in our company.



PT. PUMA ENG
Jl. Raya Jatibening Estate Blok B no 19
Perkantoran City Terrace Apartment
Jatibening - Bekasi, West Java 17461
Ph: 021 29468875/ 021 22106716



contact@puma-eng.com
info@uav-indonesia.com

Why choose UAV ?

- ✓ Fast compared with traditional method survey
- ✓ Less cost compared with full size aircraft
- ✓ Accurate with fly below cloud, clearer image resolution
- ✓ Less operating cost compared to traditional method



What Do We Do?

UAV Indonesia provide aerial photography and mapping with propeller aircraft and UAV images with a height of 100 to 400 meters.

Our advantages, cost effective approach to aerial photography achieves amazing results!



PT. PUMA ENG
Jl. Raya Jatibening Estate Blok B no 19
Perkantoran City Terrace Apartment
Jatibening - Bekasi, West Java 17461
Ph: 021 29468875/ 021 22106716



contact@puma-eng.com
info@uav-indonesia.com

INDUSTRIES SERVED

Farming



Livestock



Mining



Oil & Gas



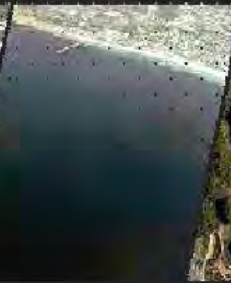
Forestry



Emergency Response



Research

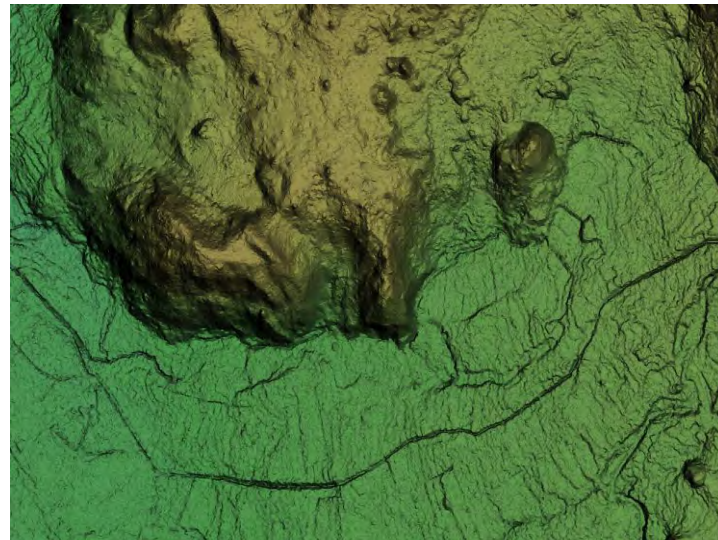
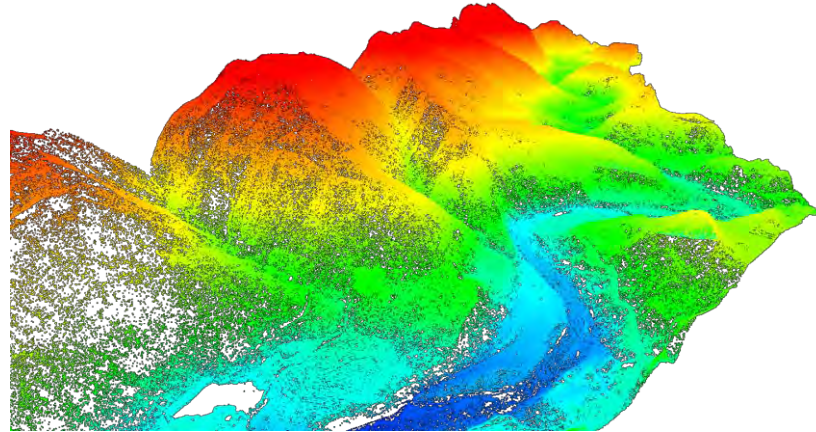
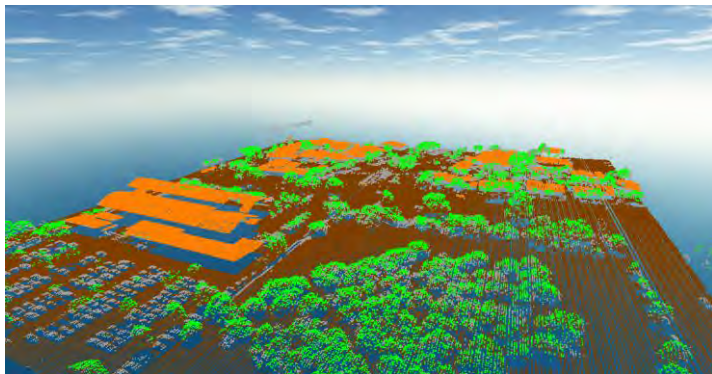


Insurance



UAV Result

- Aerial Photo
- UAV Photogrammetry
- UAV Lidar
- Ortho-photo
- Digital Terrain Modeling (DTM)
- Digital Vector mapping
- Geospatial Information Systems



UAVi 200



UAVi 200 Pro



UAVi 230



ROAVi S900



UAVi 150



ROAVi I1



HARDWARE





VISUAL SENSOR

- + High resolution, low distortion camera (RGB)
- + Produces images or video
- + Longer focal length lens on for high resolution images
- + Higher data rate storage card

Ideal for:

- + Aerial mapping and imaging
- + Photogrammetry and 3D reconstruction
- + Plant counting
- + Surveillance
- + Emergency response
- + Surveying and land use applications

Specification :

- + Effective Pixels ~ 24 Megapixel
- + Ground Resolution ~ 1 cm / pixel (at 50 m)
- + Sensor type ~ CMOS
- + Focal Length ~ 16mm



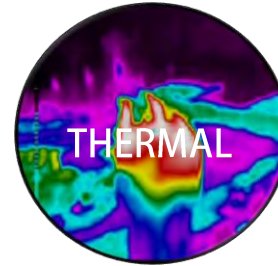
INFRARED SENSOR

Infrared sensors are used widely in:

- + Plant health measurement
- + Water quality assessment
- + Vegetation index calculation
- + Plant counting

Specification :

- + Effective Pixels ~ 12 Megapixel
- + Ground Resolution ~ 2 cm / pixel (at 50 m)
- + Sensor type ~ CMOS
- + Focal Length ~ 10mm and 18mm
- + Band ~ NIR, Green, Blue



THERMAL INFRARED (TIR) SENSORS

Micro bolometer thermal sensors are best utilized in:

- + Heat signature detection
- + Livestock detection
- + Surveillance and security
- + Water temperature detection and water source identification
- + Emergency response

Specification :

- + Effective Pixels ~ 640 x 512
- + Ground Resolution ~ 8.9cm / pixel at 100m
- + Spectral Range ~ 7.5 – 13.5 μm
- + Pixel Pitch ~ 17 μm
- + Focal Length ~ 9mm

SENSOR



PT. PUMA ENG
Jl. Raya Jatibening Estate Blok B no 19
Perkantoran City Terrace Apartment
Jatibening - Bekasi, West Java 17461
Ph: 021 29468875/ 021 22106716



contact@puma-eng.com
info@uav-indonesia.com

UAVi 200



UAVi 200 - Mapping

The UAVi 200 delta wing UAV is an easy-to-launch, terrain mapping and operational surveillance. It offers superb stability, silent and fast cruise flight and tons of Power with its dual motor configuration.

With bigger space in its belly, UAVi 200 offers to carry 16,000 mah batteries and can offer flight times up to 60 minutes depending on weather conditions.

The Mission Planner software can quickly create complete surveys in seconds. Software also serves as Ground Control Station for full flight info and in-flight commands (40 km range).

Missions are easily created or edited on the field without requiring internet access.

UAVi 200 automatically returns to home upon loss of Telemetry link.

More failsafe routines are available. Six flight modes available: Manual, Auto-stabilization, Fly By Wire, Loiter, Return-to-Home & Full Autonomous.



UAVi 230



UAVi 230 – Long Range

UAVi 230 with Rugged material from Carbon Kevlar and Fiberglass is truly a perfect Aerial Mapping and Aerial Surveillance Fixed Wing Solution. It's a Twin Propeller UAV and when it comes to long range flights in windy conditions, you can easily trust UAVi 230 that we are offering now. It offers superb stability, silent and fast cruise flight and tons of Power with its dual motor configuration. With bigger space in its belly, UAVi 230 offers to carry 40,000mah batteries and can offer flight times up to 4 hour depending on weather conditions.

The UAVi 230 is easily hand launched and all units are flight tested before delivery. The wingspan of UAVi 230 is 2300mm and is installed with our best autopilot i.e. PX4, which can realise flight automatically according to the route set on the Mission Planner. The UAVi 230 have GNSS positioning system with RTK method. The L1 receiver antenna can have the accuracy up to 2cm. Flight with UAVi 230 doesn't require the GCP.

Specifications

Wingspan	230 cm
Length	110 cm
Weight	6700 gram
Endurance	4 hour
Maximum Altitude	1000 m
Wind tolerance	Mean 14 knot Max 22 knot
Camera	HD 720p on-board recording and streaming
Communication	Wi-Fi 2.4Ghz



PT. PUMA ENG
Jl. Raya Jatibening Estate Blok B no 19
Perkantoran City Terrace Apartment
Jatibening - Bekasi, West Java 17461
Ph: 021 29468875/ 021 22106716



contact@puma-eng.com
info@uav-indonesia.com

ROAVi S900



ROAVi S900

This is a turn-key Unmanned Aircraft System (UAS) solution for the professional surveyor, roof inspector, mining operator, photogrammetry services provider and anyone who wants to cost-effectively and easily acquire and process aerial images for the purpose of orthomosaic map creation, 3D models, digital elevation models (DEM), point clouds (plan upgrade required) with the ability to precisely measure distances, areas, and volumes of objects within the mission area. The ready-to-fly / start business bundle includes the following: DJI Inspire 1 Pro multirotor UAS, complete with remote control (RC) transmitter. High-definition tablet computer mounted on RC transmitter, pre-loaded and configured with relevant apps. 3-axis brushless gimbal with integrated 24MP MFT camera with exchangeable 15mm lens (30mm full-size equivalent). High-speed memory card. Camera lens filters. Regular flight battery (1) plus high capacity spares (3). Spare propellers. Light-weight aluminum transport & storage case that's meets IATA checked baggage dimensions (no expensive surcharges!!). Rapid-charge power adapter with four-port charging hub. Tripod-mounted ground station computer with software for mission planning and autonomous flight.

SPEISIFICATION

- Weight (Battery Included) ~ 6935 gram
- Endurance ~ Approximately 15 minutes
- Max Altitude ~ 150 m
- Range ~ 3000 m



PT. PUMA ENG
Jl. Raya Jatibening Estate Blok B no 19
Perkantoran City Terrace Apartment
Jatibening - Bekasi, West Java 17461
Ph: 021 29468875/ 021 22106716



contact@puma-eng.com
info@uav-indonesia.com

OUR CLIENT

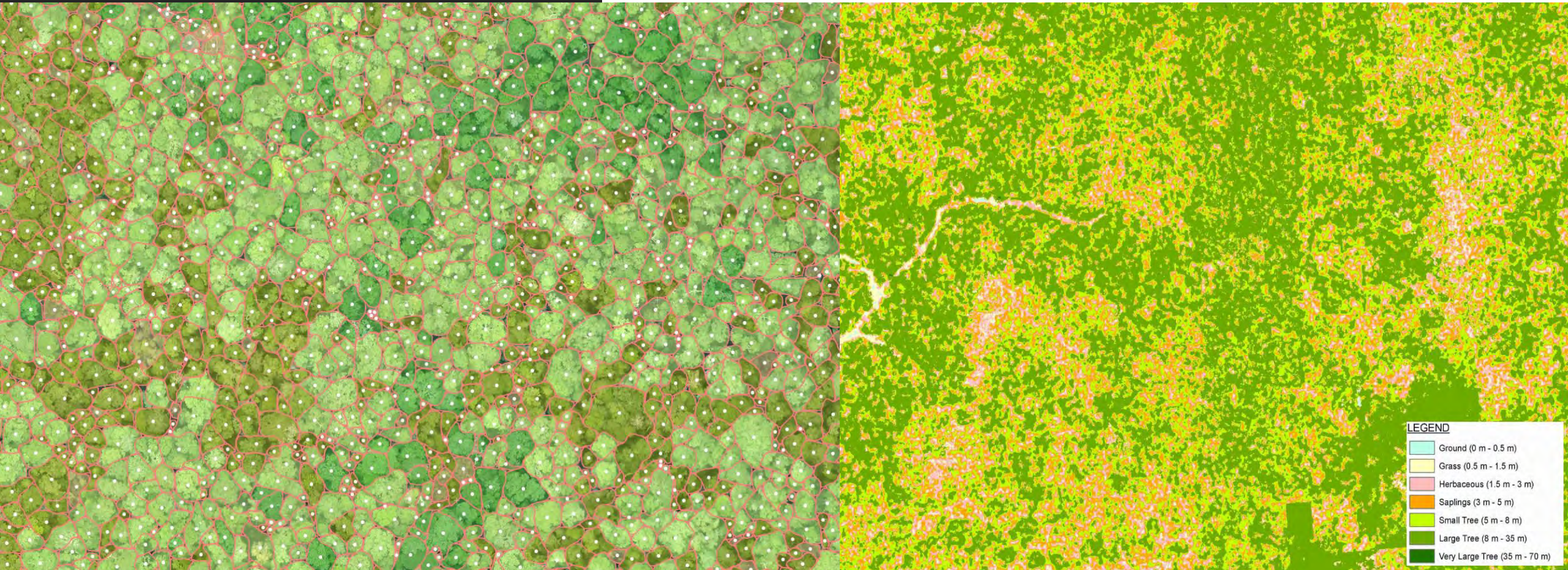


PT. PUMA ENG
Jl. Raya Jatibening Estate Blok B no 19
Perkantoran City Terrace Apartment
Jatibening - Bekasi, West Java 17461
Ph: 021 29468875/ 021 22106716



contact@puma-eng.com
info@uav-indonesia.com

SAMPLE RESULT



SAMPLE RESULT

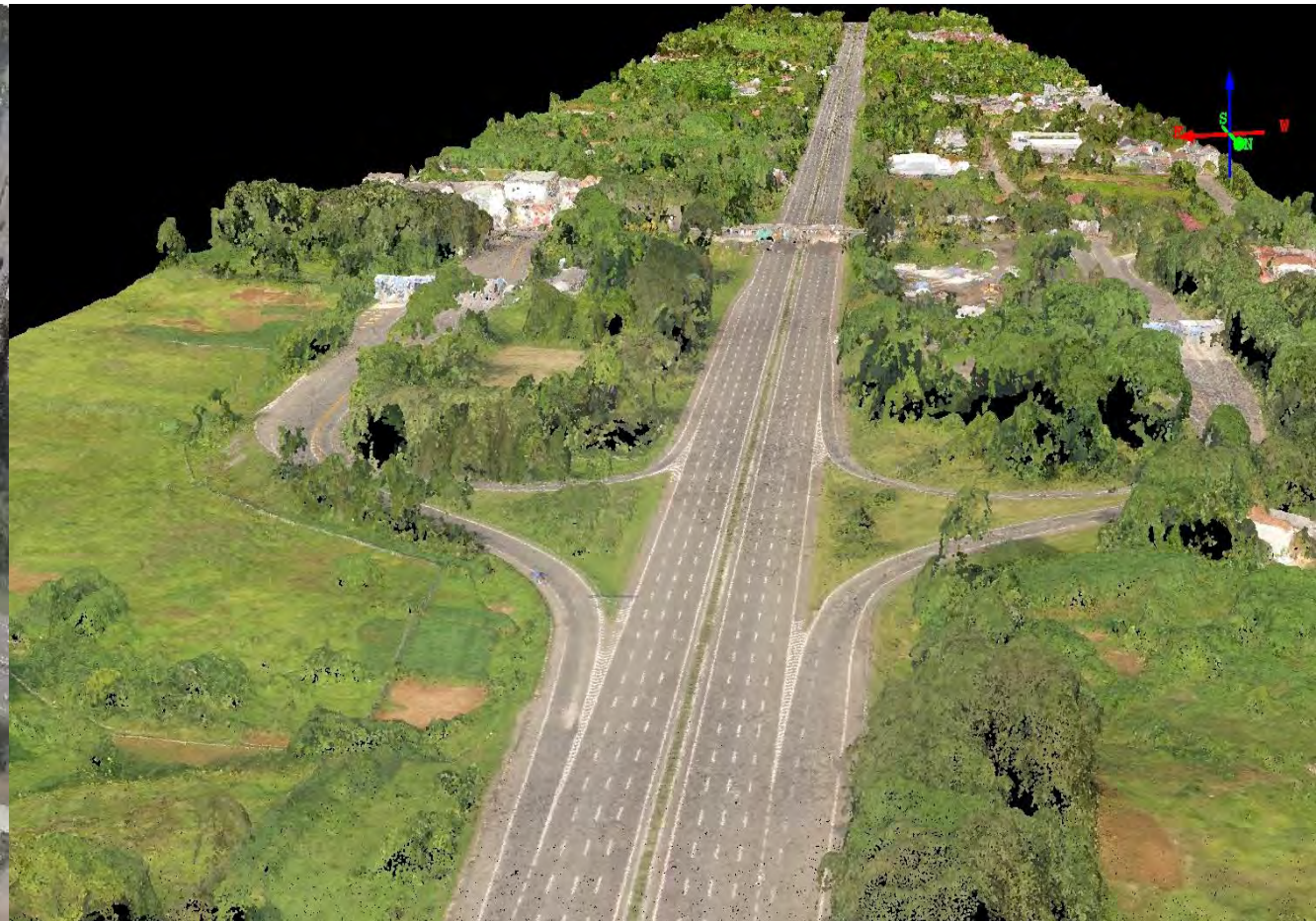


PT. PUMA ENG
Jl. Raya Jatibening Estate Blok B no 19
Perkantoran City Terrace Apartment
Jatibening - Bekasi, West Java 17461
Ph: 021 29468875/ 021 22106716



contact@puma-eng.com
info@uav-indonesia.com

SAMPLE RESULT



PT. PUMA ENG
Jl. Raya Jatibening Estate Blok B no 19
Perkantoran City Terrace Apartment
Jatibening - Bekasi, West Java 17461
Ph: 021 29468875/ 021 22106716



contact@puma-eng.com
info@uav-indonesia.com

SAMPLE RESULT

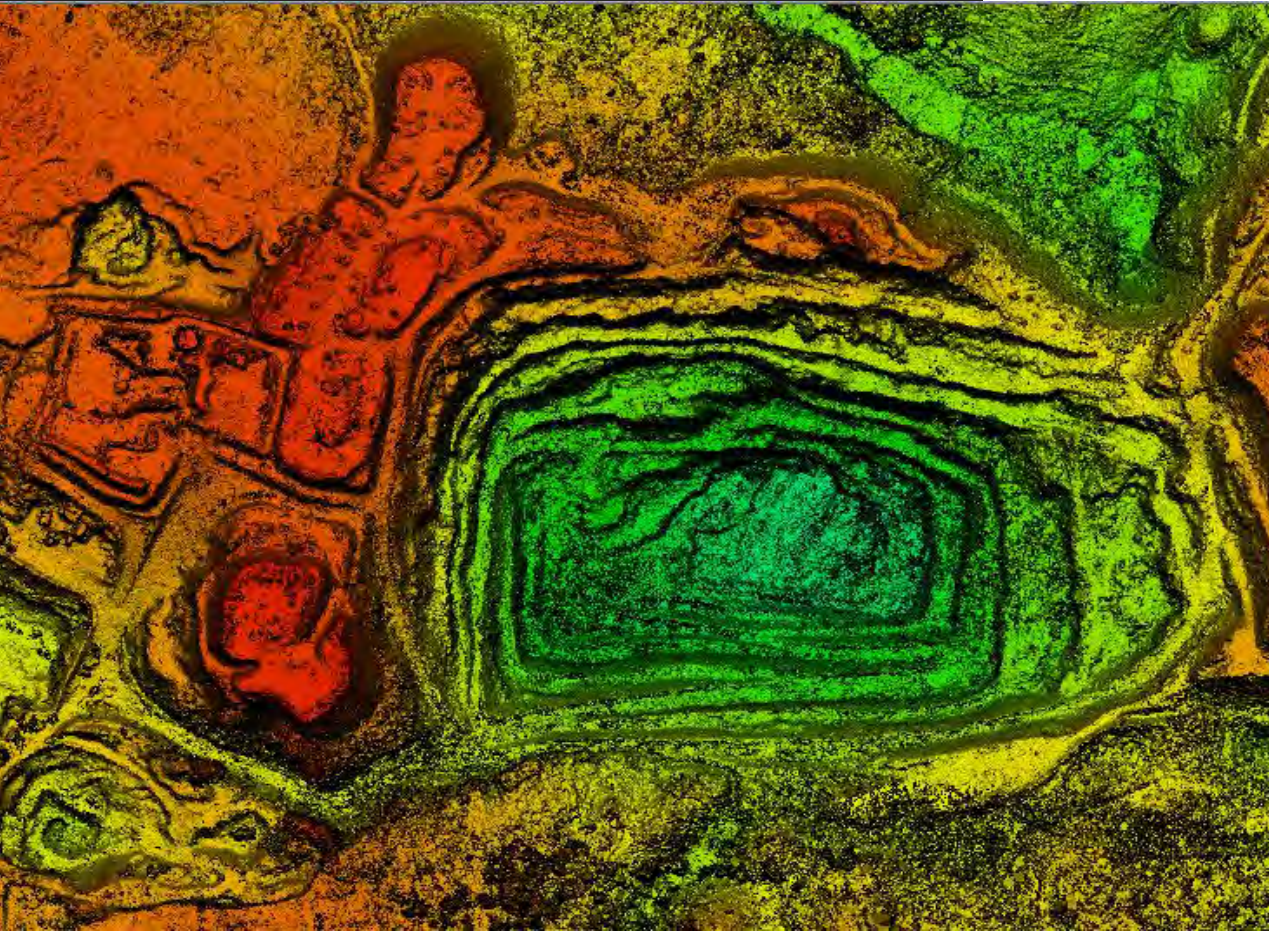


PT. PUMA ENG
Jl. Raya Jatibening Estate Blok B no 19
Perkantoran City Terrace Apartment
Jatibening - Bekasi, West Java 17461
Ph: 021 29468875/ 021 22106716



contact@puma-eng.com
info@uav-indonesia.com

SAMPLE RESULT



SAMPLE RESULT

AERIAL PHOTOGRAPHY OIL & GAS



Aerial Photo & Video

- 15 Minutes Per Flight
- 100 Still Image

WARHOUSE MAPPING



Orthophoto

- 4000 x 2000 m
- 10 min flight
- 100 pictures @ 16 Mp
- 5 cm GSD
- Altitude 50 meter



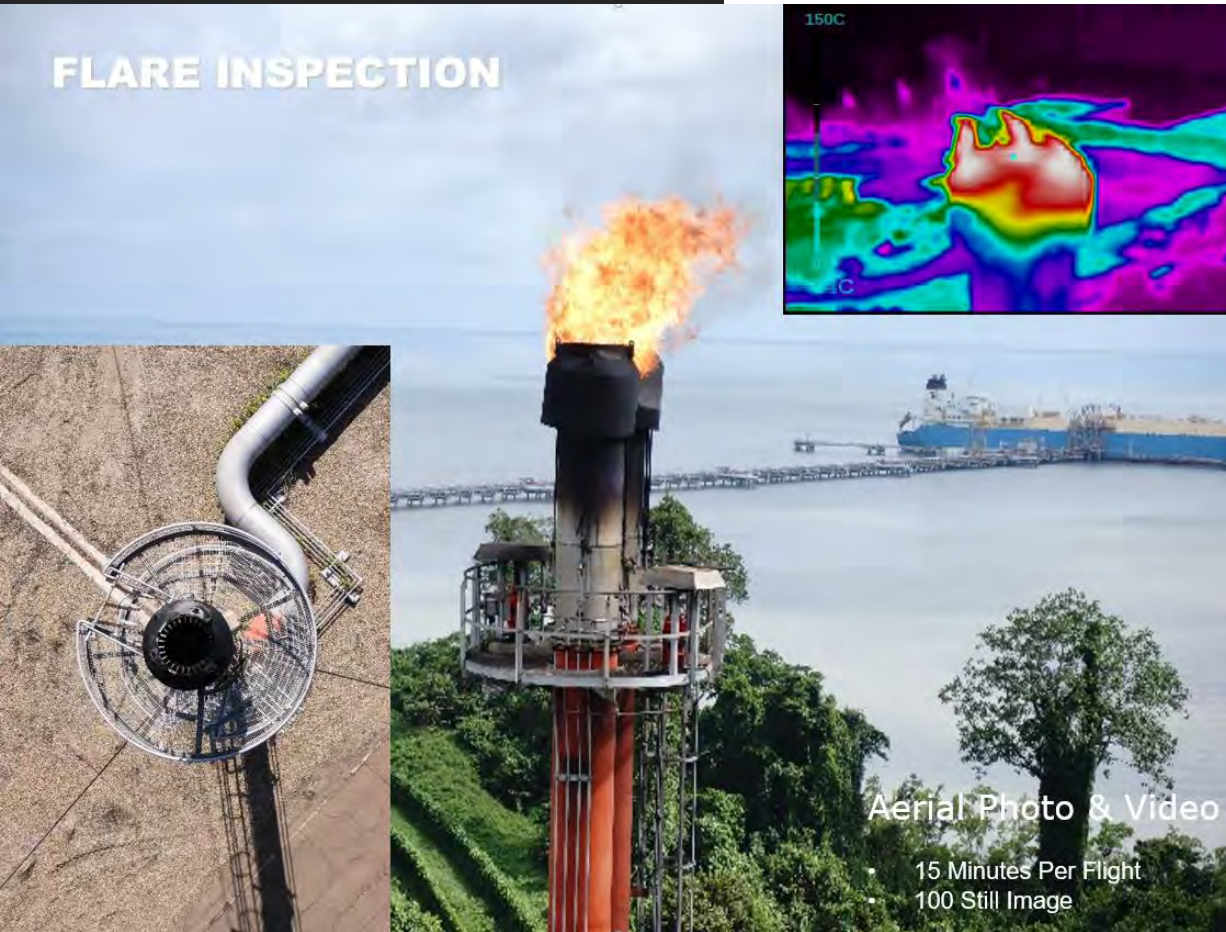
PT. PUMA ENG
Jl. Raya Jatibening Estate Blok B no 19
Perkantoran City Terrace Apartment
Jatibening - Bekasi, West Java 17461
Ph: 021 29468875/ 021 22106716



contact@puma-eng.com
info@uav-indonesia.com

SAMPLE RESULT

FLARE INSPECTION



VIDEOGRAPHY OIL & GAS





PT. PUMA ENG
Jl. Raya Jatibening Estate Blok B no 19
Perkantoran City Terrace Apartment
Jatibening - Bekasi, West Java 17461
Ph: 021 29468875/ 021 22106716



contact@puma-eng.com
info@uav-Indonesia.com

WWW.UAV-INDONESIA.COM